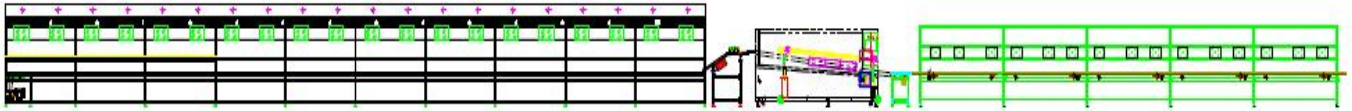
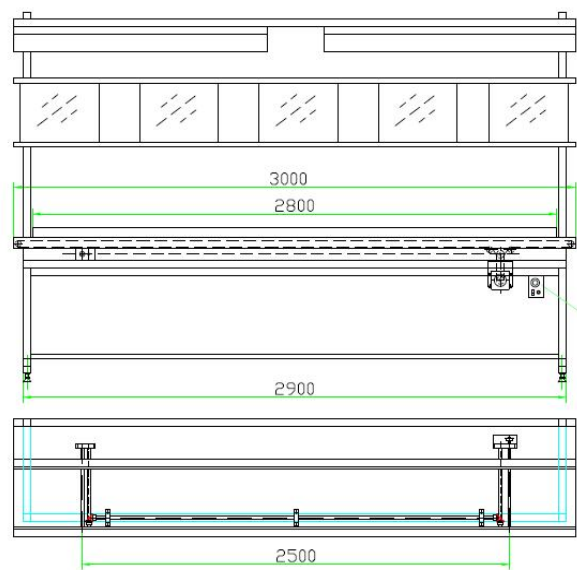
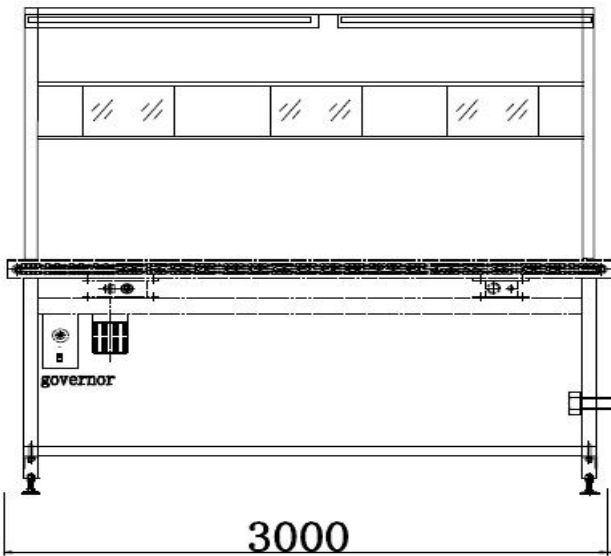


I.C.T DIP and Assembly Belt Line

Whole line drawing:



DIP Insertion Line(Manual&Automatic)



1. Size :(L)3000*(W)600*(H) 1950±20mm.

2. Drive System :Taiwan motor(2HP)and 80# Retarder, inverter made by adlaspower,speed range 0-5m/min(only for automatic line).
3. Main body: 40×40mm aluminium product;rail by 40×60mm aluminium;lantern support by 40×40mm aluminium,Frame made by 40 x 40 aluminium product.
4. Lighting System: 40w lighting, lamp by FSL, Wire is 1.5², Subsection control.
5. Power: The lower line socket, both sides separate control, wire using 4 square wire, each with 2 meters, about 1 each, trough made of galvanized plate production, the size is 60 * 80 * 1 mm.
6. Accessory: operation card made by 25×14“H” aluminium product, with A4 transparent hard plastic.

Configuration:

Motor	2HP,made by AIDELI(for auto line)
Inverter	2HP,made by AIDELI
Main body	40×40mm, aluminium
Operation Card	25×14“H” aluminium
Lighting	40w FSL lamp
Rail	40×60mm,aluminium

Specification:

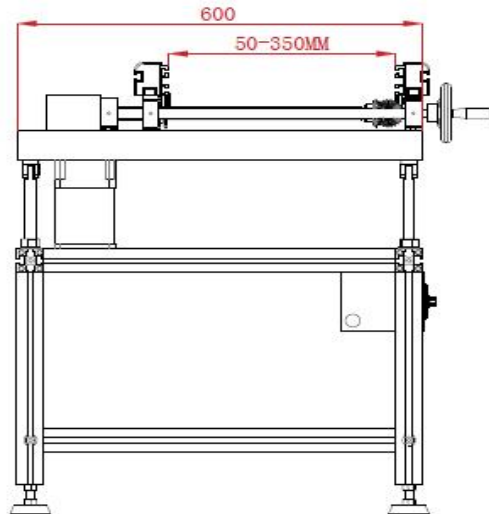
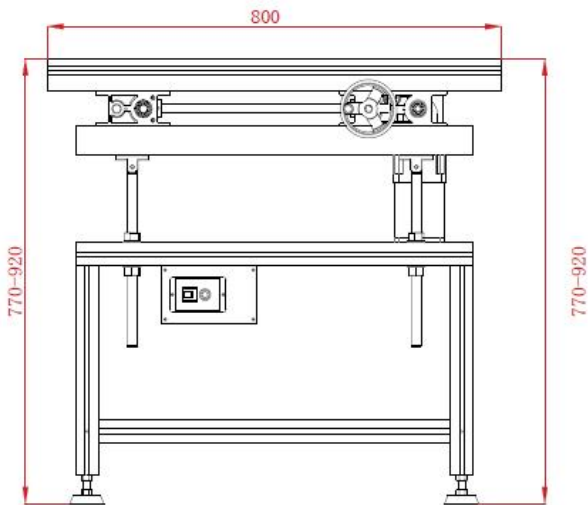
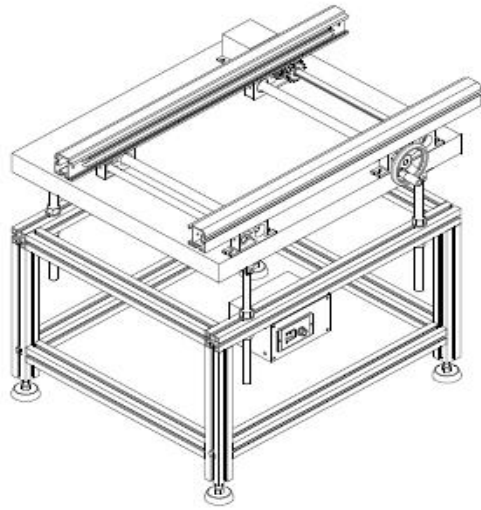
Dimension(mm)	3000*600*1950mm/set
PCB Width	50 – 350mm(adjustable)
PCB Thickness	0.6 – 6.0mm
Transport Height	750±20mm
Control Mode	Manual or Motor
Power	Max 50 VA
Air Supply	4-6bar
PCB Direction	L to R or R to L
Power Supply	1 PH AC 220V 50/60Hz (Option:110V to 380V)
Weight	260Kg/set

DIP Insertion Line Case:





Wave Loader



- 1.Modular design, optional assembly as per client’s requirement.
- 2.Solid aluminum structure design improves equipment stability .
- 3.Smooth stainless steel screw to adjust the width of the rail.
- 4.Variable speed control.
- 5.Using a dedicated aluminum slot for transfer orbit to prevent PCB stuck.
- 6.Heavier bottom design, not easily shift.
- 7.Machine length can be customized.

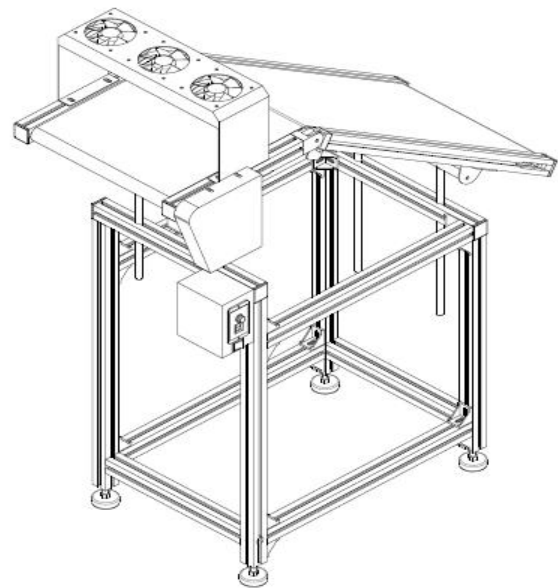
Configuration:

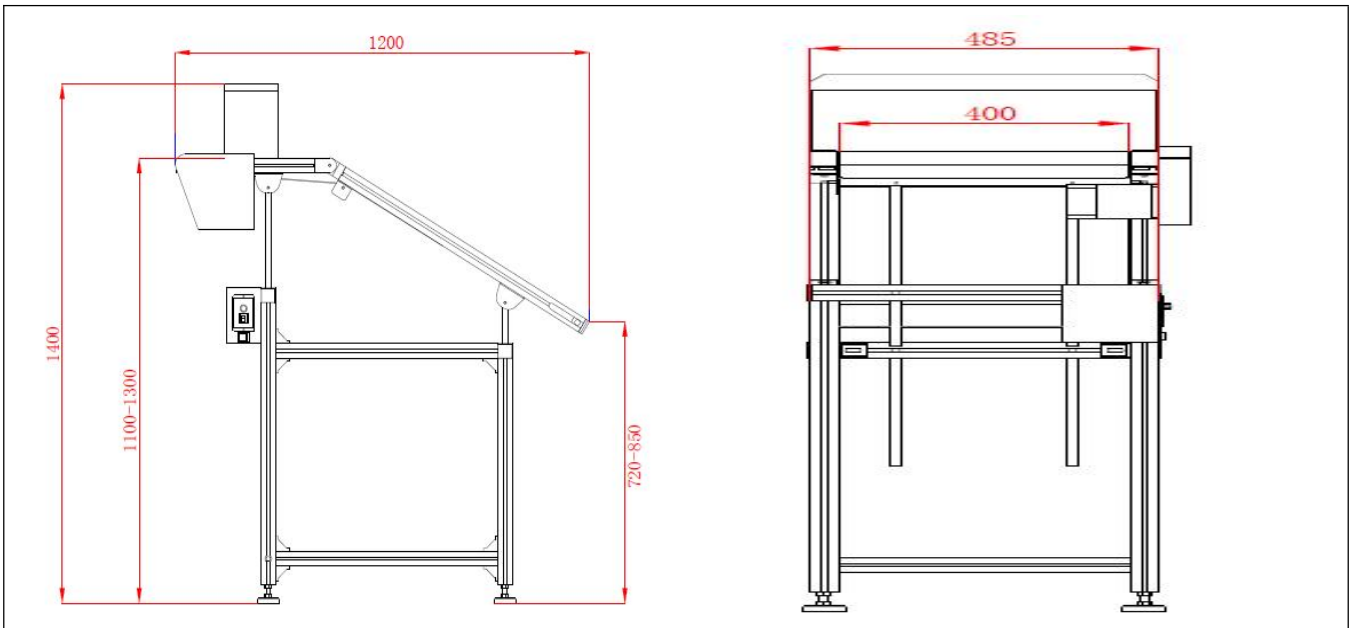
Motor	2HP,made by AIDELI
Inverter	2HP,made by AIDELI
Main body	40×40mm, aluminium
Rail	40×60mm,aluminium

Specification:

Dimension(mm)	800*600*950mm/set
PCB Width	50 – 350mm(adjustable)
PCB Thickness	0.6 – 6.0mm
Transport Height	750±20mm
Control Mode	Motor
Power	Max 20 VA
PCB Direction	L to R or R to L
Power Supply	1 PH AC 220V 50/60Hz (Option:110V to 380V)
Weight	220Kg/set

Wave Unloader





- 1.Modular design, optional assembly as per client’s requirement.
2. Rugged steel design, improves equipment stability .
3. High temperature antistatic belt.
4. More cooling fans can be installed.
5. The conveying height can be adjusted flexibly.
- 6.Heavier bottom design, not easily shift.
- 7.Machine length can be customized.

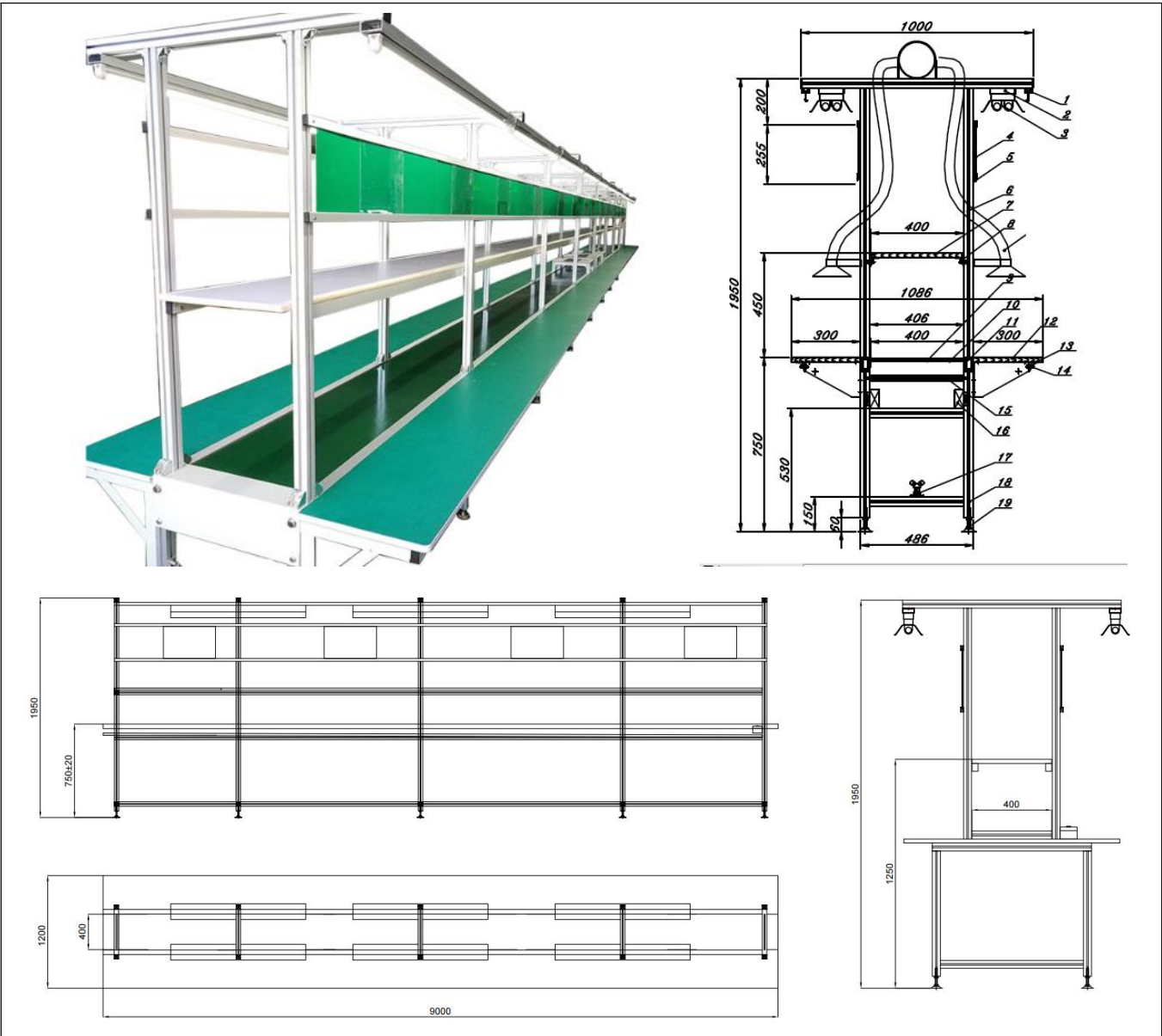
Configuration:

Motor	2HP,made by AIDELI
Inverter	2HP,made by AIDELI
Main body	40×40mm, steel
Belt	High temperature antistatic belt(Non slip belt optional)

Specification:

Dimension(mm)	1200*485*1400mm
PCB Width	50 – 400mm (can be customized)
Transport Height	1300 - 750±20mm
Control Mode	Motor
Cooling Mode	Fan
Power	Max 20 VA
PCB Direction	L to R or R to L
Power Supply	1 PH AC 220V 50/60Hz (Option:110V to 380V)
Weight	290Kg/set

Assembly Belt Line



1. Size : (L)9000*(W)1200*(H) 1950±20mm,with working table(Can be adjusted by customer).
2. Drive System : Taiwan motor(2HP)and 80# Retarder, inverter made by adlaspower,speed range 0-5m/min.
3. Main body: 40×40mm aluminium product;rail by 40×60mm aluminium;lantern support by 40×40mm aluminium,Frame made by 40 x 40 aluminium product.
4. Lighting System: 40w lighting, lamp by FSL, Wire is 1.5², Subsection control.
5. Power: The lower line socket, both sides separate control, wire using 4 square wire, each with 2 meters, about 1 each, trough made of galvanized plate production, the size is 60 * 80 * 1 mm.
6. Working table :300*15mm plywood,surface with anti-fire materials.
7. Drive roller :Made of stainless steel tube, ø25mm.
8. PVC belt :Green Anti-static PVC belt(400*2mm), Seamless.
9. Accessory: operation card made by 25×14"H" aluminium product, with A4 transparent hard plastic.

Configuration:

Belt	Green Anti-static PVC belt(400*2mm), Seamless			
Motor	2HP,made by AIDELI			
Retarder	80#,made by AIDELI			
Inverter	2HP,made by AIDELI			
Main body	40x40mm, aluminium			
Operation Card	25x14"H" aluminium			
Lighting	40w FSL lamp			
Drive roller	ø25mm roller			
Rail	40x60mm,aluminium			
Air switch	DELIXI			
Other Accessory:				
Tweezers	Electric screwdriver	Nippers	Electric hot air gun	screwdriver
Wind gun	ESD ion fan	Soldering station	Exhaust hood	Wire stripper
Glue gun	tin suction device	Exhaust pipe	Air pipe	ESD anti static box
Specification:				
Dimension(mm)	9000*1200*1950mm/set(Can be adjusted)			
Belt Width	400mm(Can be adjusted)			
Transport Weight	<100Kg			
Transport Height	750±20mm			
Control Mode	Motor			
Power	Max 100 VA			
Air Supply	4-6bar			
Transport Direction	L to R or R to L			
Power Supply	1 PH AC 220V 50/60Hz (Option:110V to 380V)			
Weight	160Kg/m			

Assembly Belt Line Case:





* I.C.T keeps working on quality and performance, specifications and appearance may be updated without particular notice.

Thanks for choosing I.C.T.
I.C.T looks forward to win-win cooperation.
Thank you.